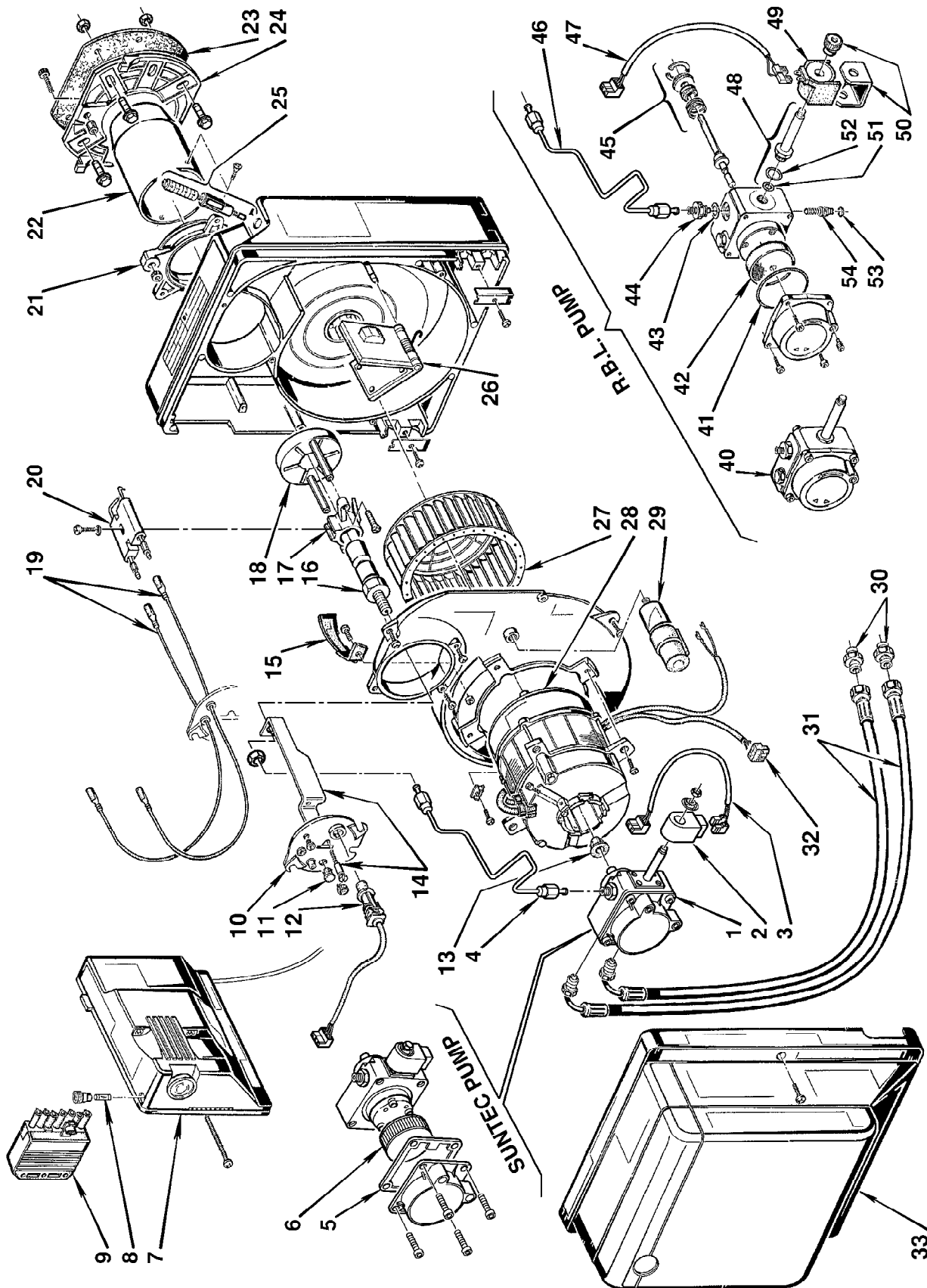


Bruciatore di gasolio • Oil burner • Brûleur fioul domestique • Öl-Gebläsebrenner
Quemador de gasóleo

Gulliver RG1

COD. **3736350**

TIPO / TYPE / TYP **363 T1**



N.	COD.	DESCRIZIONE	DESCRIPTION	DESCRIPTION	BESCHREIBUNG	DENOMINACIÓN	MATRICOLA BRUCIATORE BURNER SERIAL NUMBER MATRICULE BRULEUR BRENNER KENN-NUMMER MATRICULA QUEMADOR
1	3002495	POMPA SUNTEC	SUNTEC PUMP	POMPE SUNTEC	SUNTEC ÓLPUMPE	BOMBA SUNTEC	≥ 01132XXXXXXX
2	3002451	BOBINA	COIL	BOBINE	MV SPULE	BOBINA	≥ 01132XXXXXXX
3	3002496	COLLEGAMENTO	LEAD	CABLE DE CONNEXION	ANSCHLUßKABEL MV	CABLES ELECTROVÁLVULA	≥ 01132XXXXXXX
4	3002503	TUBO	TUBE	TUYAU	DRUCKROHR	TUBO	≥ 01132XXXXXXX
5	3003081	GUARNIZIONE	SEAL	JOINT	DICHTUNG	JUNTA	≥ 01132XXXXXXX
6	3003082	FILTRO	FILTER	FILTRE	FILTRE	FILTRO	≥ 01132XXXXXXX
7	3001174	APPARECCHIATURA 552SE	CONTROL BOX 552SE	BOITE DE CONTROLE 552SE	STEUERGERÄT 552SE	CAJA DE CONTROL 552SE	
8	3007396	FUSIBILE	FUSE	FUSIBLE	FEINSICHERUNG	FUSIBLE	
9	3006937	SPINA A 7 POLI	7 PIN PLUG	FICHE 7 POLES	7 - POLIGER STECKER	CONNECT.MACHO DE 7 CONT.	
10	3007613	COPERCHIO	COVER	COUVERCLE	DECKEL	TAPA	
11	3007458	VETRINO	VIEWING PORT	REGARD	VERSCHLUßSTOFEN	MIRILLA	
12	3007839	FOTORESISTENZA	P.E. GELL	GELLULE PHOTORESIST.	FOTOWIDERSTAND	FOTORESISTENCIA	
13	3000443	GIUNTO	JOINT	ACCOUPLMENT	PUMPENKUPPLUNG	ACOPLAMIENTO	
14	3007615	STAFFA E VITE	BRACKET AND SCREW	SUPPORT ET VIS	DÜSENSTOCKHALTERUNG	SOPORTE ARRASTREY TORNIL.	
15	3007475	CONVOGLIATORE	SUCTION DUCT	CONVOYEUR D'AIR	LUFTLEITBLECH	GUIA	
16	3007496	PORTAUGELLO	NOZZLE HOLDER	PORTE GICLEUR	DÜSENSTOCK	PORTABOQUILLA	
17	3007466	SUPPORTINO	SUPPORT	SUPPORT	HALTERUNG	SOPORTE	
18	3007616	ELICA	DIFFUSER DISC	ACCROCHE FLAMME	STAUSCHEIBE	DISCO ESTABILIZADOR	≤ 011400XXXXXXX
19	3007465	COLLEGAMENTO A.T.	HIGH VOLTAGE LEAD	CABLE HAUTE TENSION	KABEL ZÜNDELEKTRODEN	CABLES ELECTRODOS	≥ 01410XXXXXXX
20	3007617	GRUPPO ELETTRODI	ELECTRODE ASSEMBLY	GROUPE ELECTRODES	ELEKTRODENBLOCK	ELECTRODOS	≤ 01400XXXXXXX
21	3007515	COLLARE	COLLAR	COLLIER	BRENNERFLANSCH	COLLARÍN	≥ 01410XXXXXXX
22	3007618	BOCCAGLIO	BLAST TUBE	GUEULARD	FLAMMROHR	TUBO LLAMA	≥ 01410XXXXXXX
23	3005787	SCHERMO	GASKET	JOINT	KESSELFLANSCH-DICHTUNG	JUNTA AISLANTE	
24	3008636	FLANGIA	FLANGE	BRIDE	KESSELFLANSCH	BRIDA	
25	3007517	REGOLATORE SERRANDA	AIR DAMPER REGULATOR	SYSTEME REGLAGE D'AIR	LUFTREGULIERUNG	REGULADOR REGISTRO AIRE	≤ 01400XXXXXXX
25	3008937	REGOLATORE SERRANDA	AIR DAMPER REGULATOR	SYSTEME REGLAGE D'AIR	LUFTREGULIERUNG	REGULADOR REGISTRO AIRE	≥ 01410XXXXXXX
26	3007519	SERRANDA	AIR DAMPER	VOLET AIR	LUFTKLAPPE	REGISTRO DEL AIRE	≤ 01400XXXXXXX
26	3008815	SERRANDA	AIR DAMPER	VOLET AIR	LUFTKLAPPE	REGISTRO DEL AIRE	≥ 01410XXXXXXX
27	3007476	GIRANTE	FAN	VENTILATEUR	GEBLÄSERAD	TURBINA	
28	3008489	MOTORE	MOTOR	MOTEUR	MOTOR	MOTOR	
29	3007479	CONDENSATORE 4 µF	CAPACITOR 4 µF	CONDENSATEUR 4 µF	KONDENSATOR 4 µF	CONDENSADOR 4 µF	
30	3009068	RACCORDO	CONNECTOR	MAMELON	ANSCHLUßNIPPEL	RACORD	
31	3005720	TUBO FLESSIBILE	FLEXIBLE OIL LINE	FLEXIBLE	ÖLSCHLAUCH	TUBO FLEXIBLE	
32	3007454	PRESA MOTORE	MOTOR SOCKET	PRISE MOTEUR	STECKDOSE FÜR MOTOR	CONECTOR MOTOR	
33	3008080	COFANO	COVER	CAPOT	BRENNERHAUBE	ENVOLVENTE	
40	3007771	POMPA R.B.L.	R.B.L. PUMP	POMPE R.B.L.	R.B.L. ÖLPUMPE	BOMBA R.B.L.	≤ 01122XXXXXXX
41	3007162	ANELLO OR	O-RING	JOINT TORIQUE	O-RING-DICHTUNG	JUNTA TÓRICA	≤ 01122XXXXXXX
42	3005719	FILTRO	FILTER	FILTRE	FILTEREINSATZ ÖLPUMPE	FILTRO	≤ 01122XXXXXXX
43	3007087	GUARNIZIONE	SEAL	RONDELLE	DICHTUNG ANSCHLUßNIPPEL	JUNTA	≤ 01122XXXXXXX
44	3007268	RACCORDO	CONNECTOR	MAMELON	ANSCHLUßNIPPEL PUMPE	RACORD	≤ 01122XXXXXXX
45	3000439	ORGANO DI TENUTA	PUMP SEAL	ORGANE D'ETANCHEITE	WELLENDICHTUNG	CONJUNTO ESTANQUIDAD	≤ 01122XXXXXXX
46	3007614	TUBO	TUBE	TUYAU	DRUCKROHR	TUBO	≤ 01122XXXXXXX
47	3007772	COLLEGAMENTO	LEAD	CABLE DE CONNEXION	ANSCHLUßKABEL MAGNETVEN.	CABLES ELECTROVÁLVULA	≤ 01122XXXXXXX

